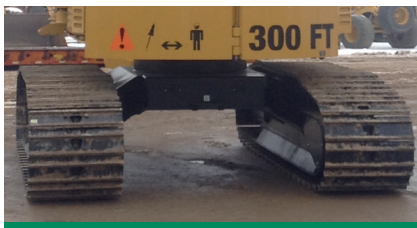


# H157 TRACK HARVESTER



## TRACTION AND UNDERCARRIAGE.

The X-frame body design offers 26" of ground clearance with D5 size heavy-duty links for adverse conditions. The 2-speed motors provide speed or power as required. Overall width of 9'4" and tractive effort to weight ratio of 1:1, make it perfect for climbing hills, soft terrain, and deep snow.



## BEST IN CLASS SERVICEABILITY.

Two gull wing style doors, hinged counterweight fuel tank and hydraulic tilting cab enable best in class serviceability to all sides of the engine and hydraulic components. Ground level service access for all filters and grease points makes for safer and faster servicing.



## EFFICIENT, LOW IMPACT MACHINE.

Low ground pressure and well matched tractive effort to weight ratio provide maneuverability with minimal site disturbance. The exceptional fuel efficiency and optimized cooling and hydraulic systems offer a light weight, small footprint machine with the lowest operating costs.



## CARBODY MOUNTED TOOL BOX.

Easily accessible and spacious tool box offers storage space for tools and spare saw bars and chains to minimize down time when working at the stump. With over 3.5 ft<sup>3</sup> (0.10 m<sup>3</sup>) of cargo space, keep key serviceable items secure with the machine for quick repairs.



## MAXIMUM OPERATOR COMFORT.

Operator experience is maximized through a spacious cab, great forward and side to side visibility, easy access, and a heated and cooled seat. The forward positioned cab with 10 LED work lights offers optimum visibility day and night. Machine controls feature an easy to use operator interface.



## FH190 HARVESTING HEAD.

The continuous rotation, fixed head with center post design has options for a 2 or 4 roller system. Valve and controller are mounted on the head to minimize hydraulic lines on the boom and stick. Length and optional diameter measuring are integrated into the Weiler control system.

# H157 SPECIFICATIONS

<b>Engine Model</b>	Cat® C4.4 Stage 5	<b>Tractive Effort</b>	43,000 lbf 19 504 kgf	<b>Fuel Tank Capacity</b>	78 gal 295 L
<b>Gross Power</b>	184 hp 137 kW	<b>Undercarriage Size</b>	D5 HD	<b>Engine Oil Capacity</b>	6.0 gal 23 L
<b>Engine Displacement</b>	269 in³ 4.4 L	<b>Undercarriage Pitch</b>	7.5" 191 mm	<b>Hydraulic System Capacity</b>	70 gal 265 L
<b>Weight (w/FH190 head)</b>	47,000 lb 21 319 kg	<b>Ground Clearance</b>	26" 660 mm	<b>Transport Width</b>	9' 4" 2.84 m
<b>Maximum Flow</b>	80 gpm 303 L/min	<b>Track Gauge</b>	88" 2235 mm	<b>Height</b>	11' 1" 3.38 m
<b>Max. Reach (w/FH190 head)</b>	23' 0" 7.01 m	<b>Track Length</b>	156" 3962 mm	<b>Length (boom ext., w/FH190)</b>	29' 9" 9.07 m
<b>Lift at Max. Reach (no head)</b>	8,500 lb 3856 kg	<b>Swing Torque</b>	30,400 lbf-ft 41.2 kNm		

Base configuration includes 19' 10" (6.04 m) fixed harvester boom and stick, 24" (600 mm) shoes, and FH190 harvesting head.

## POWERTRAIN

Cat C4.4 engine certified to EPA Stage 5  
Hydraulically driven reversing fan  
7 RPM swing speed

## UNDERCARRIAGE

Heavy-duty track roller frames  
D5 HD track  
Top track support slides

## HYDRAULICS

140 cc variable displacement pump  
Load sensing valves

## ELECTRICAL

24-volt electrical system  
Weiler control and programming system  
Satellite radio w/Bluetooth  
6 cab mounted LED work lights  
4 machine mounted LED work lights  
Product Link™ ready

## OTHER STANDARD EQUIPMENT

Hydraulic cab tilt for improved engine access  
Hydraulically opening gull wing engine shields  
Hydraulically opening fuel tank for improved engine access

# FH190 SPECIFICATIONS

<b>Weight (w/2 rollers)</b>	7,000 lb 3175 kg	<b>Max Cut Diameter</b>	19" 483 mm	<b>Feed Force - High Speed</b>	2,320 lbf 1052 kgf
<b>Max. Feed Roller Opening</b>	21" 533 mm	<b>Feed Speed - High Speed</b>	15 ft/s 4.57 m/s	<b>Feed Force - High Torque</b>	4,640 lbf 2105 kgf
<b>Max. Knife Opening</b>	21" 533 mm	<b>Feed Speed - High Torque</b>	7.5 ft/s 2.29 m/s		

## STANDARD EQUIPMENT

Center post structure  
Head mounted valve and controller  
Continuous rotation with hydraulic and electrical swivels  
Three delimeter knives  
Speed encoder on each roller drive motor

## SALES AND SERVICE

Sold and serviced exclusively through Weiler Forestry dealers worldwide

WEILERFORESTRY.COM

Materials and specifications are subject to change without notice.  
Featured machines and photos may include optional equipment. All rights reserved.

H157 HRC, SS (04-2021)

## OPERATOR ENVIRONMENT

Enclosed FOPS/OPS/ROPS/OR-OSHA/WCB certified cab  
Air suspension seat with integrated joysticks and head rest  
Left-hand tilt console  
Retractable 4-point seat belt  
Touchscreen display monitor and programmable operator controls  
Scratch resistant polycarbonate windows  
Reverse slope 1.25" (32 mm) front windshield  
Front window emergency escape  
Skylight  
Left-side fresh air window  
Pressurized cab with filtered ventilation  
Heater / air conditioner / defroster  
Mount locations for CB radio and other accessories  
Behind seat storage tray  
Three cup holders, two USB sockets, and literature holder

## OPTIONAL EQUIPMENT

19' 10" (6.04 m) fixed boom and stick  
26' (7.92 m) boom with telescopic stick (dangle head)  
Arctic starting aid  
Top track support rollers  
24" (600 mm) SG D5 HD Track  
24" (600 mm) DG D5 HD Track  
28" (710 mm) DG D5 HD Track  
2-Roller or 4-Roller FH190 continuous rotation harvester head

## ADDITIONAL STANDARD EQUIPMENT

Independent Measuring Device (IMD) length measuring system  
Machined feed rollers  
11H size main saw w/auto tensioning, auto return, & adjustable bar speed  
Integrated cab mounted operator controls with Weiler programming

## WARRANTY

12 months standard, extended warranty available