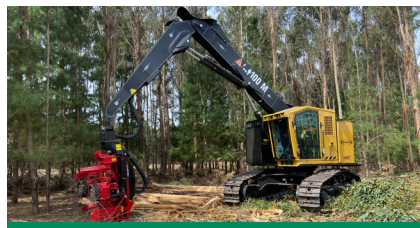


H457 TRACK HARVESTER



ENHANCED MACHINE EFFICIENCY.

Excellent multi-function capability through dedicated hydraulic pumps and optimized circuit configurations. Innovative ease-of-use features, such as the ability to reduce the frequency of foot pedal motions, improves operator efficiency.



POWERFUL PERFORMANCE.

Enhanced stability and travel speeds, along with a powerful combination of lift capacity, swing torque, and tractive effort provides for maximum performance. Standard and long boom and stick options allow the machine to be matched for harvester head size and application.



UNOBSTRUCTED GROUND CLEARANCE.

Elevated, unobstructed carbody with 33" (832 mm) of ground clearance enables unimpeded travel over rocks, stumps, and other debris. Angle between carbody and roller frames allows maximum clearance across the width of the carbody.



MAXIMUM OPERATOR COMFORT.

New cab maximizes operator experience through increased space, improved visibility, optimized operator controls, reverse opening door for easier access to the harvester head, and options that include a heated and cooled seat, deluxe lights, and cameras.



PROVEN RELIABILITY AND DURABILITY.

Forestry-duty cooling package and extensive validation of key common components that includes the engine, swing system, and grease-lubricated Cat® 336 HD HEX undercarriage ensure machine uptime and reduce operating costs.



EXCELLENT SERVICEABILITY.

Counterweight walkway enables machine level access to gull-wing engine enclosure that provides unmatched serviceability of components. Enclosure provides a flat area to complete preventative maintenance and service.

H457 SPECIFICATIONS

Engine Model	Cat® C9.3 Tier 3	Tractive Effort	68,848 lbf 31 229 kgf	Fuel Tank Capacity	216 gal 819 L
Gross Power	298 hp 222 kW	Undercarriage Size	336 HD HEX	Engine Oil Capacity	10.6 gal 40 L
Engine Displacement	568 in³ 9.3 L	Undercarriage Pitch	8.5" 216 mm	Transport Width	10' 11" 3.32 m
Weight (no head)	67,140 lb 30 454 kg	Ground Clearance	33" 832 mm	Height	11' 3" 3.42 m
Max. Reach (standard)	29' 6" 9.00 m	Track Gauge	102" 2580 mm	Length (boom ext., standard)	36' 11" 11.25 m
Max. Reach (long)	32' 6" 9.91 m	Track Length	192" 4868 mm	Length (boom ext., long)	39' 11" 12.16 m
Lift at Max. Reach (standard)	9,980 lb 4530 kg	Maximum Flow	287 gpm 1085 L/min	Length (boom tuck., standard)	24' 9" 7.56 m
Lift at Max. Reach (long)	8,800 lb 3990 kg	Hydraulic System Capacity	79.8 gal 302 L	Length (boom tuck., long)	26' 9" 8.17 m

Base configuration includes long harvester boom and stick and 24" (600 mm) single grouser shoes. (reach, lift, and length assume no head attached)

POWERTRAIN

- Cat C9.3 engine certified to EPA Tier 3
- Primary, secondary, and tertiary fuel filters, including water separator
- Side-by-side radiator and oil cooler
- Swing out air-to-air cooler and air conditioner condenser
- Removable debris screen
- Centrifugal engine air pre-cleaner
- Under-hood 2-stage engine air cleaner
- Variable pitch, reversing fan with guard
- Heavy-duty starter and ether aid

UNDERCARRIAGE

- Heavy-duty track roller frames
- Grease-lubricated 336 HD HEX track
- Straddle mounted carrier rollers
- Heavy-duty bottom track rollers
- Heavy-duty recoil mechanisms
- Full length track shoe support
- Heavy-duty travel motor and swivel guards
- Towing eyes on base frame

HYDRAULICS

- One hydraulic pump group for implement functions
- One hydraulic pump group for track
- Dedicated attachment pump for harvester head functions
- High-performance hydraulic return filters
- 325 size, high torque swing drive
- Swing cushion valve and automatic swing parking brake
- Electric hydraulic oil fill pump
- Spare hose storage area

ELECTRICAL

- 115 ampere alternator
- 24-volt electrical system with 2 12-volt batteries
- Wiring for harvester head controls
- 9 LED working lights and 2 LED service lights
- Horn and travel alarm
- Secondary engine shut off switch

SALES AND SERVICE

Sold and serviced exclusively through Weiler Forestry dealers worldwide

WEILERFORESTRY.COM

OPERATOR ENVIRONMENT

- Enclosed FOPS/ROPS/OPS/OR-OSHA/WCB certified cab
- Air suspension with integrated joysticks and head rest
- Left-hand tilt console
- Retractable 4-point seat belt
- Touchscreen display monitor and programmable operator controls
- Harvester joystick controls
- Reverse opening side door
- Scratch resistant polycarbonate windows
- Reverse slope 1.25" (32 mm) front windshield
- Front window emergency escape
- Skylight
- Left-side fresh air window
- Pressurized cab with filtered ventilation
- Heater / air conditioner / defroster
- Radio ready with speakers
- Mount locations for CB radio and other accessories
- Behind seat storage tray
- Three cup holders, two USB sockets, and literature holder

OTHER STANDARD EQUIPMENT

- Heavy-duty hood enclosure
- Heavy-duty counterweight with machine level engine enclosure access
- Heavy-duty doors, covers, and bottom guards

OPTIONAL EQUIPMENT

- 29.5 ft (9.0 m) Standard Harvester Boom and Stick
- 32.5 ft (9.9 m) Long Harvester Boom and Stick
- 30 or 50 mm Counterweight
- Standard or Star Carrier Rollers
- 24" (600 mm) SG 336 HD HEX Track
- 28" (710 mm) SG or DG 336 HD HEX Track
- 36" (900 mm) TG 336 HD HEX Tri-Track
- Std. or Deluxe Cab (heated-cooled seat / satellite radio / sun screens)
- Standard or Deluxe Lights (14 LED working lights)
- Standard, Cold, or Arctic Starting Aid
- Product Link™ (PL243 cellular or PL631 satellite)
- Vacuum Pump

WARRANTY

12 months standard, extended warranty available

Materials and specifications are subject to change without notice.
Featured machines and photos may include optional equipment. All rights reserved.

H457 T3, SS (12-2022)